

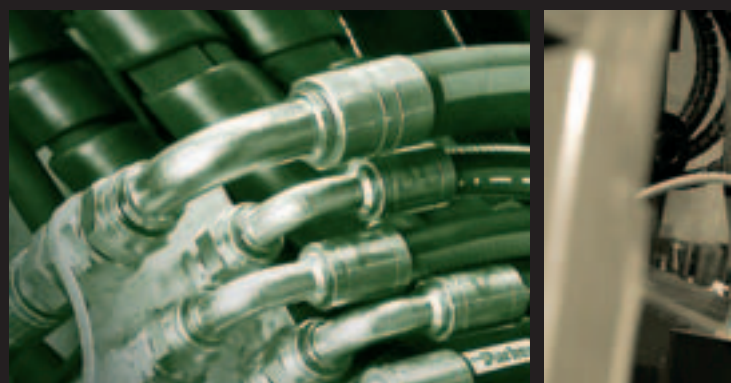


# THE LATEST CRANE TECHNOLOGY

Kesla has almost 50 years of experience in the development and manufacturing of crane technology. Today the Kesla brand stands for high-quality timber crane expertise. Kesla's crane product family covers all the work stages of wood harvesting and processing.

Kesla cranes have been designed to withstand hard wear in even the most extreme climatic and operating conditions. Designed for professional use, the models combine up-to-date crane technology with state-of-the-art components and materials. Kesla's manufacturing processes comply with international quality criteria; every product passes through a rigorous quality control program, as well as practical performance and safety testing.

Several leading OEM manufacturers rely on Kesla cranes because they know that suitable models for the most common base machines can be found from the crane product family.



00

561H

571H

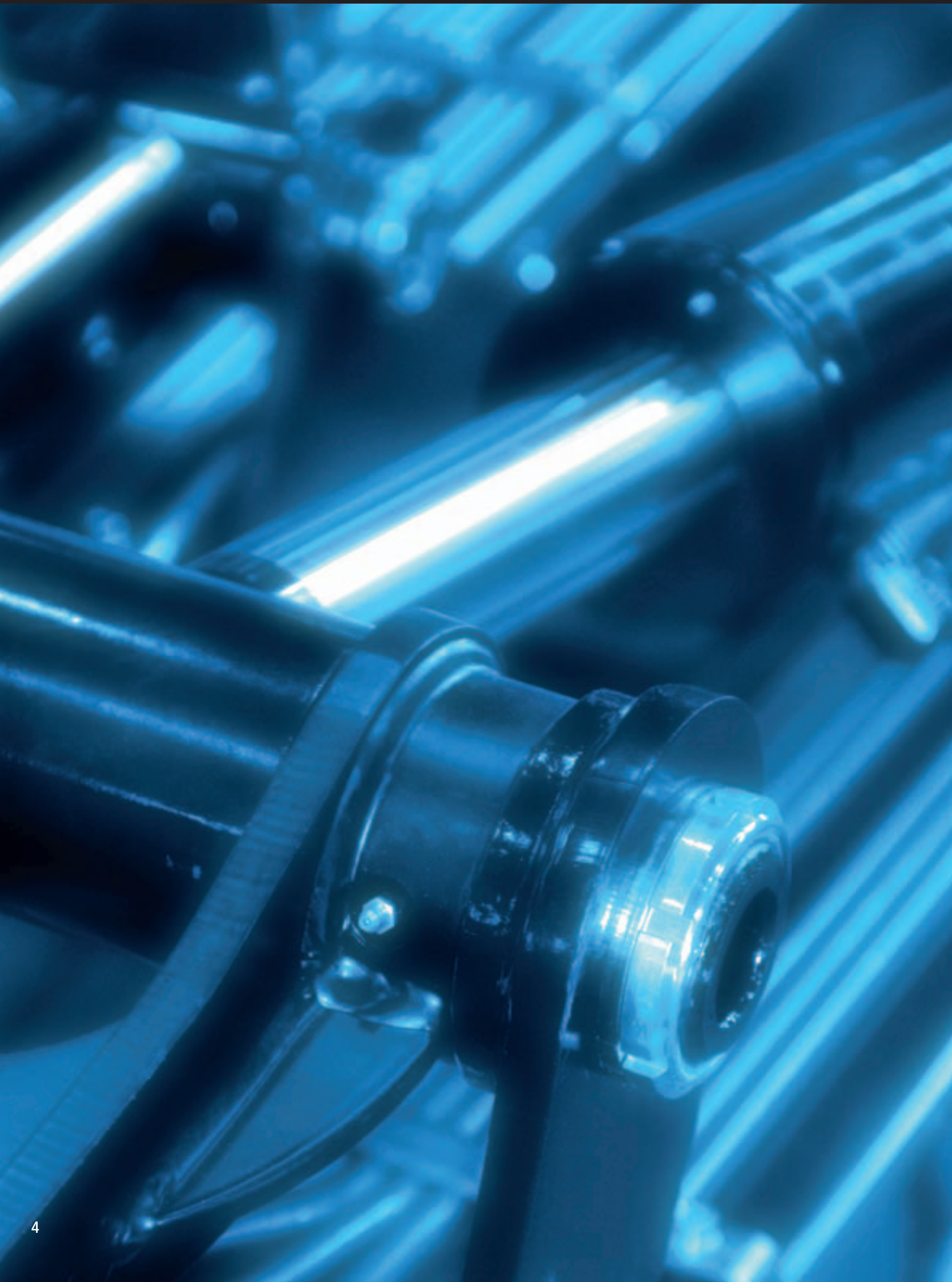
1395H

13105H

700R

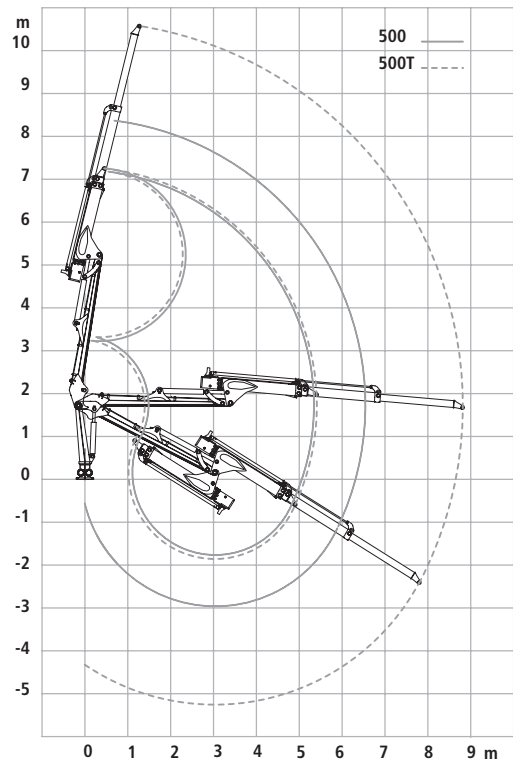
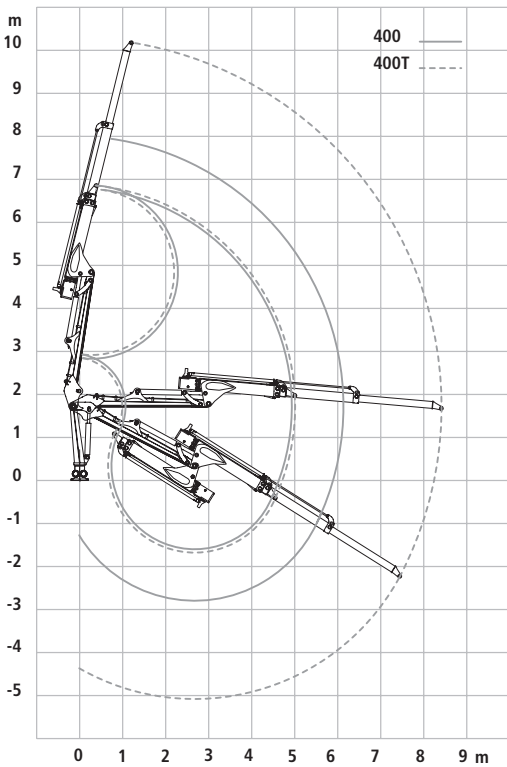
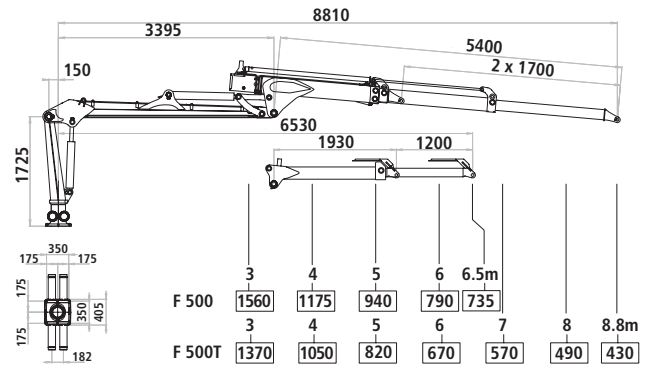
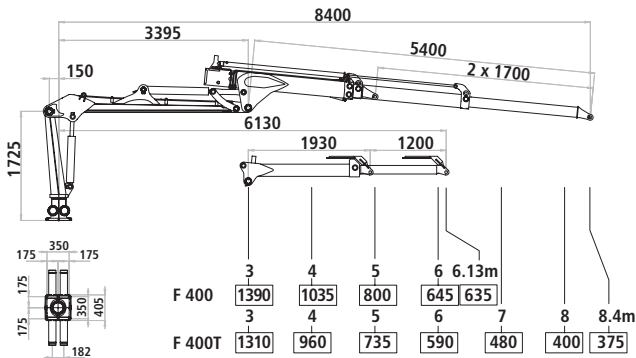
1258R







Kesla's single and double extension 400/500 models suit small forwarders, heavy-duty timber trailers, and are excellent general loaders for farm tractors' rear platforms. The model is available with low or high pillars, and can be furnished with P24 or F29 timber grapples, E15 energy grapples as well as a comprehensive line of rotators. Models can also be delivered with control valves.



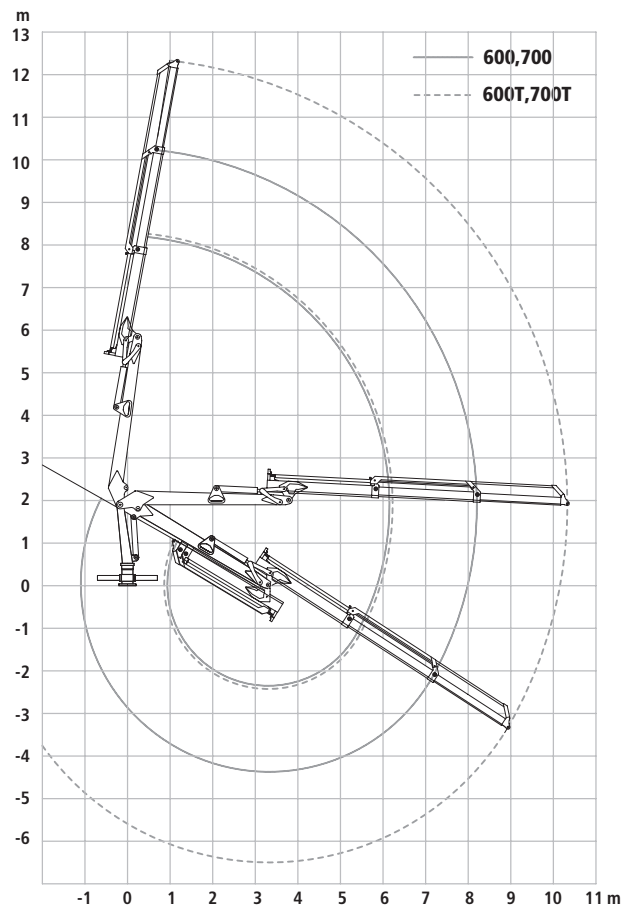
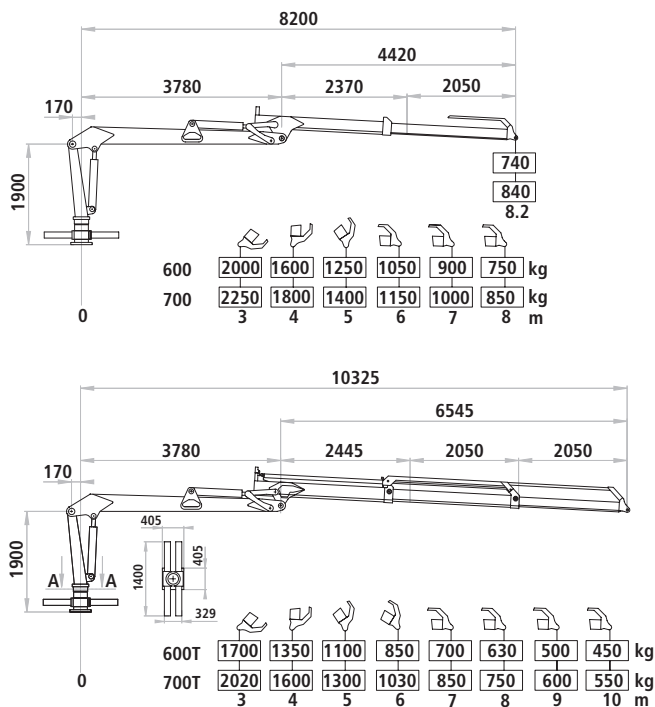
TECHNICAL SPEC.	400		400T	
Lifting torque, net:	40 kNm	29 502 ft-lb	37 kNm	27 290 ft-lb
Outreach;	6 130 mm	20'-1 "	8 400 mm	27'-10 "
Boom extension:	1 200 mm	3'-11 "	2x1 700 mm	2x5'-7 "
Slewing torque, gross:	16 kNm	11 800 ft-lb	16 kNm	11 800 ft-lb
Slewing angle:	380 °	380 °	380 °	380 °
Lifting capacity at 4-m reach:	1 035 kg	2 282 lb	960 kg	2 110 lb
Weight without oil, grapple and rotator:	960 kg	2 110 lb	1 140 kg	2 513 lb
Pump recommendation:				
- working pressure	18.5 bar	2 630 psi	18.5 bar	2 630 psi
- flow	50-70 l/min	13-18 gpm	50-70 l/min	13-18 gpm
- power input	15-22 kW	20-30 hp	15-22 kW	20-30 hp
Boom's pulling force:	20.6 kN	4 631 lbf	18.1 kN	4 069 lbf

TECHNICAL SPEC.	500		500T	
Lifting torque, net:	47 kNm	34 665 ft-lb	41 kNm	30 240 ft-lb
Outreach:	6 530 mm	21'-5 "	8 800 mm	28'-11 "
Boom extension:	1 200 mm	3'-11 "	2x1 700 mm	2x5'-7 "
Slewing torque, gross:	16 kNm	11 800 ft-lb	16 kNm	11 800 ft-lb
Slewing angle:	380 °	380 °	380 °	380 °
Lifting capacity at 4-m reach:	1 175 kg	2 590 lb	1 050 kg	2 315 lb
Weight without oil, grapple and rotator:	970 kg	2 138 lb	1 150 kg	2 535 lb
Pump recommendation:				
- working pressure	18.5 MPa	2 683 psi	18.5 MPa	2 683 psi
- flow	60-80 l/min	16-21 gpm	60-80 l/min	16-21 gpm
- power input	18-25 kW	24-36 hp	18-25 kW	24-36 hp
Boom's pulling force:	20.6 kN	4 631 lbf	18.1 kN	4 069 lbf

The values provided by the manufacturer are indicative. Kesla reserves the right to make changes. The cranes pictured may have additional accessories.



Kesla's single and double extension 600/700 models suit middle-sized forwarders, the feeding of chipping machines and terminal use. The model is available with low or high pillars and can be furnished with F29 timber grapples, E20 energy grapples, as well as a comprehensive line of rotators. Models can also be delivered with control valves.

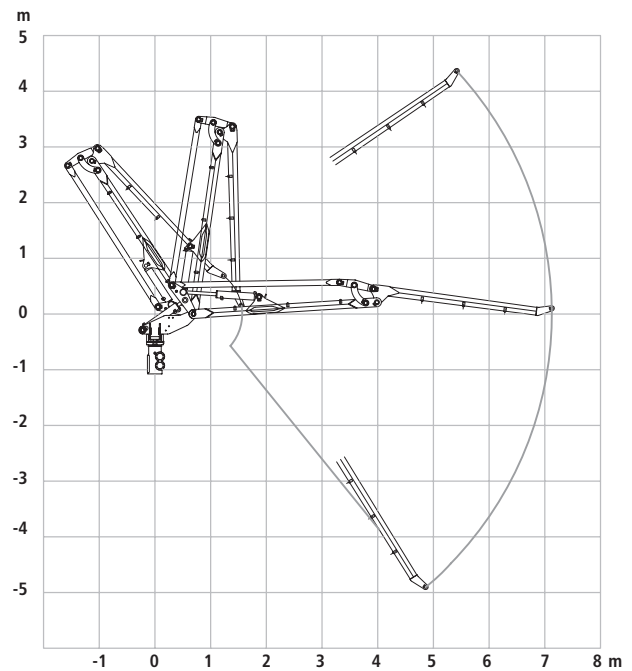
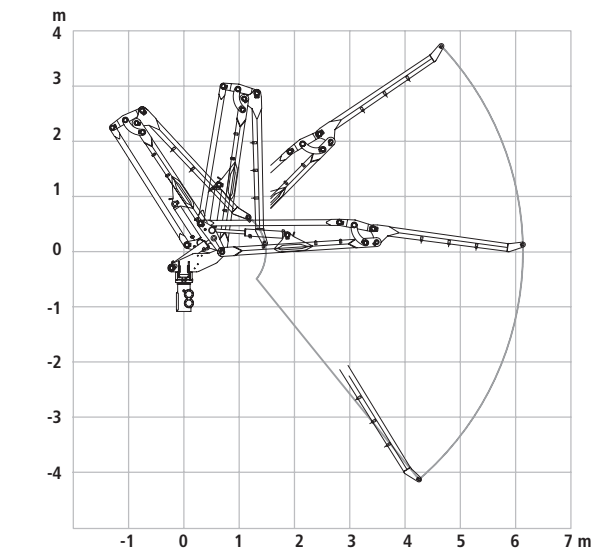
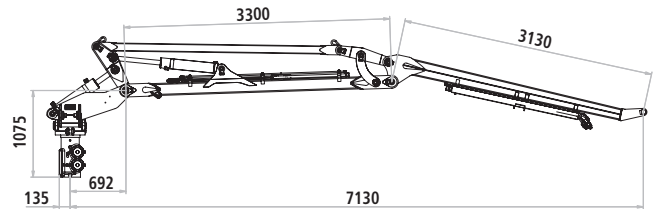
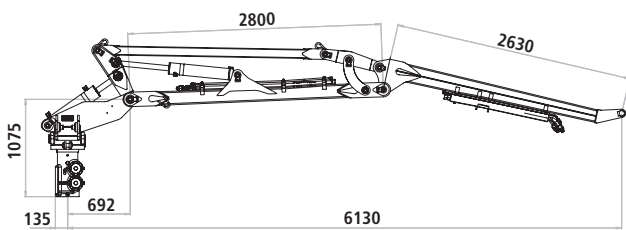


TECHNICAL SPECIFICATIONS	600		600T		700		700T	
Lifting torque, net :	60 kNm	44 254 ft-lb	53 kNm	39091 ft-lb	70 kNm	51 629 ft-lb	64 kNm	47 204 ft-lb
Outreach:	8 200 mm	26'-11 "	10 325 mm	33'-11 "	8 200 mm	26'-11 "	10 325 mm	33'-11 "
Boom extension:	2 050 mm	6'-9 "	2 x 2 050 mm	2 x 6'-9 "	2 050 mm	6'-9 "	2 x 2 050 mm	2 x 6'-9 "
Slewing torque, gross:	24 kNm	17 702 ft-lb	24 kNm	17 702 ft-lb	24 kNm	17 702 ft-lb	24 kNm	17 702 ft-lb
Slewing angle:	186 / 268 / 380 / 420 °		186 / 268 / 380 / 420 °		186 / 268 / 380 / 420 °		186 / 268 / 380 / 420 °	
Weight without oil, grapple and rotator:	1 425 kg	3142 lb	1 610 kg	3549 lb	1 445 kg	3186 lb	1 630 kg	3594 lb
Pump recommendation:								
- working pressure	22 MPa	2682 psi	22 MPa	2682 psi	19 MPa	2756 psi	19 MPa	2756 psi
- flow	70-90 l/min	18-24 gpm	70-90 l/min	18-24 gpm	80-100 l/min	21-26 gpm	80-100 l/min	21-26 gpm
- power input	25-32 kW	34-43 hp	25-32 kW	34-43 hp	25-32 kW	34-43 hp	25-32 kW	34-43 hp
6 Boom's pulling force:	23,6 kN	5305 lbf	17,2 kN	3867 lbf	20,1 kN	4518 lbf	15,2 kN	3417 lbf

The values provided by the manufacturer are indicative. Kesla reserves the right to make changes. The cranes pictured may have additional accessories.



Kesla's lighter harvester cranes are well suited to medium-sized farm tractors and small harvester platforms. Equipped with a cylinder slew, the harvester crane can be used with the Kesla 18RH/S harvester head or Kesla 20SH stroke harvester.



TECHNICAL SPECIFICATIONS	561H	
Lifting torque, net:	42 kNm	30 978 ft-lb
Outreach:	6 130 mm	20'-1"
Slewing torque, gross:	16 kNm	11 801 ft-lb
Slewing angle:	220 °	220 °
Tilt angle:	21 °	21 °
Weight without oil, grapple and rotator:	1 140 kg	2 513 lb
Pump recommendation:		
- working pressure	19 MPa	2 756 psi
- flow	70-90 l/min	18-24 gpm
- power input	22-28 kW	30-38 hp
Harvester head recommendation:	Kesla 18RH/S, Kesla 20SH	

TECHNICAL SPECIFICATIONS	571H	
Lifting torque, net:	38 kNm	28 027 ft-lb
Outreach:	7 130 mm	23'-5"
Slewing torque, gross:	16 kNm	11 801 ft-lb
Slewing angle:	220 °	220 °
Tilt angle:	21 °	21 °
Weight without oil, grapple and rotator:	1 180 kg	2 601 lb
Pump recommendation:		
- working pressure	19 MPa	2 756 psi
- flow	70-90 l/min	18-24 gpm
- power input	22-28 kW	30-38 hp
Harvester head recommendation:	Kesla 18RH/S, Kesla 20SH	

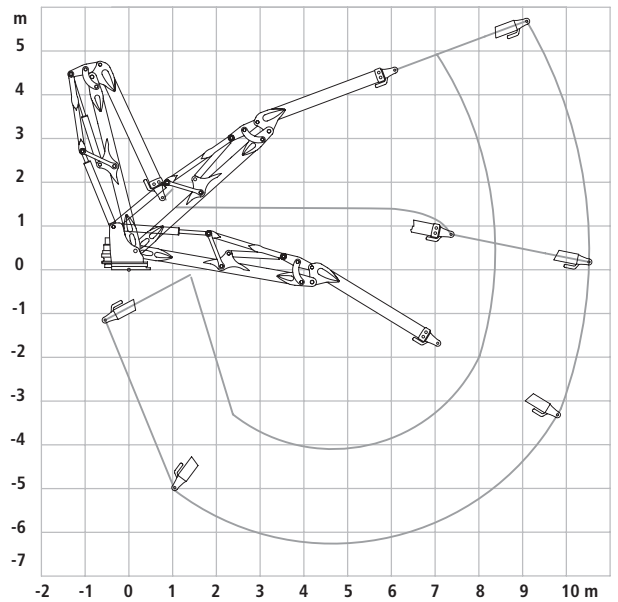
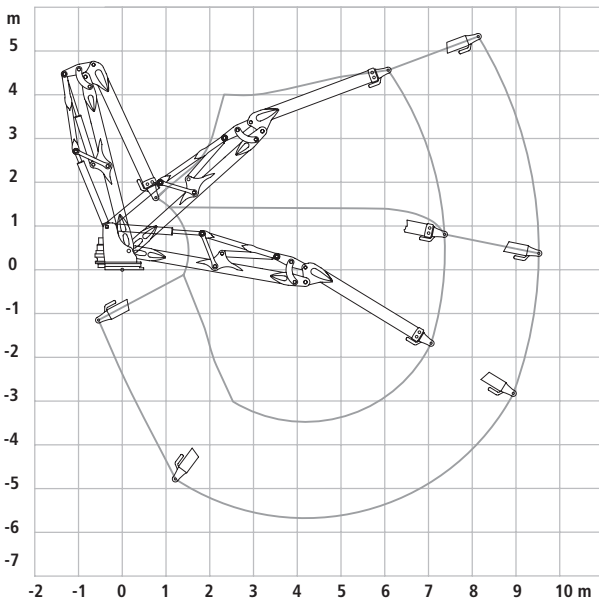
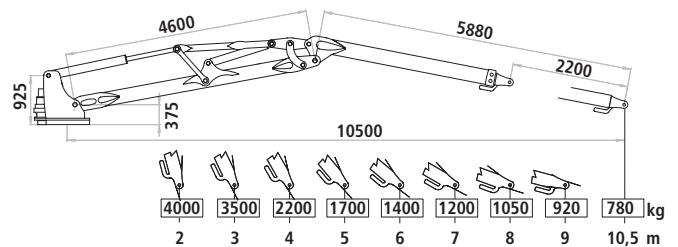
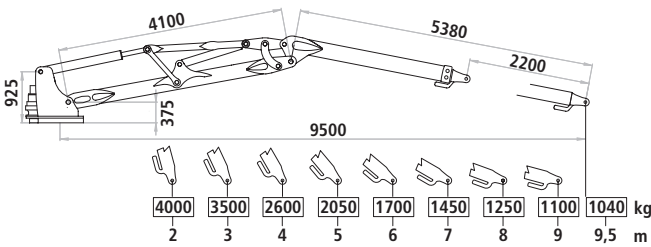
The values provided by the manufacturer are indicative. Kesla reserves the right to make changes. The cranes pictured may have additional accessories.







Kesla's new harvester cranes bring new power to wood harvesting. The 1395 and 13105 models equipped with motor slew are sturdy and suit middle-sized harvesters. The 1395 has been designed for final fellings; the parallel 13105 model's reach of 10.5 m makes it ideal for thinning.



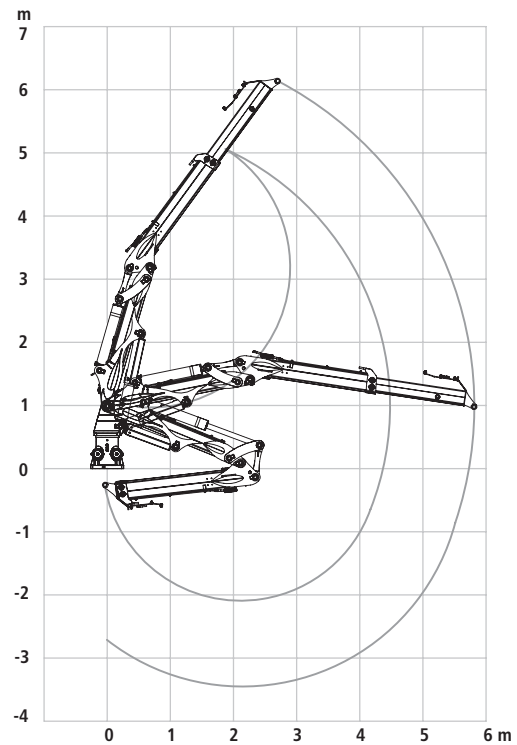
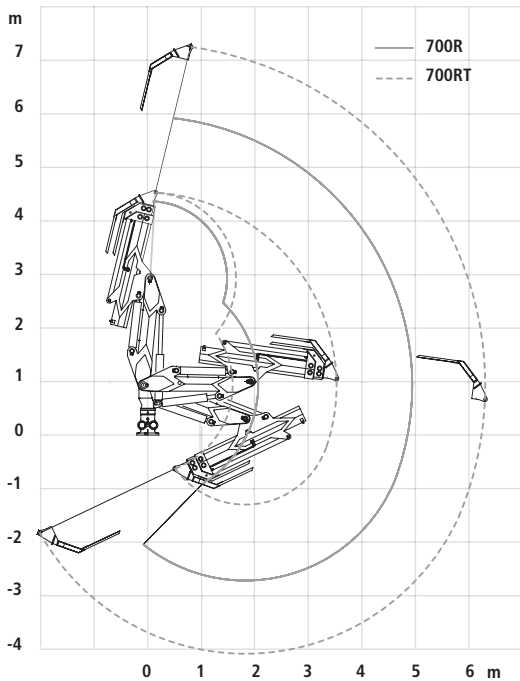
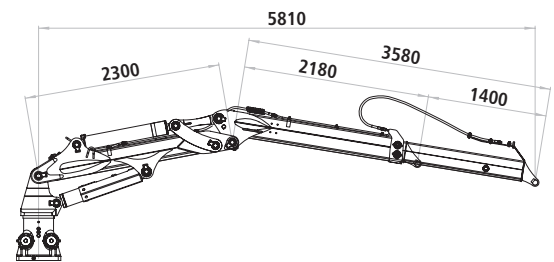
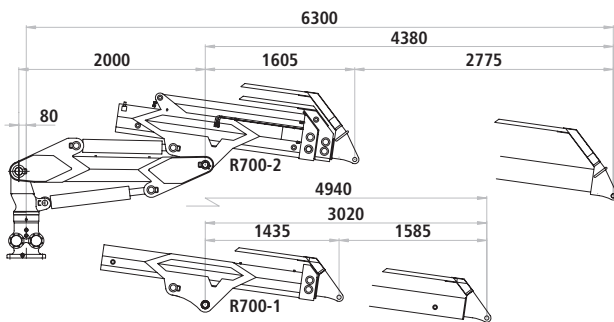
TECHNICAL SPECIFICATIONS		1395H	
Lifting torque with reach at horizontal level, net:	100 kNm	73 756 ft-lb	
Outreach:	9 500 mm	31'-2"	
Slewing torque, gross (p=19 MPa, 2756 psi):	39 kNm	28 765 ft-lb	
Slewing angle:	260 °	260 °	
Stroke of boom extension:	2 200 mm	7'-3"	
Weight (without stabilizer):	1 900 kg	4 189 lb	
Pump recommendation:			
- working pressure	21 MPa	3 046 psi	
- flow	100-120 l/min	26-32 gpm	
- power input	34-42 kW	51-56 hp	
Harvester head recommendation:	Kesla 25RH/S		

TECHNICAL SPECIFICATIONS		13105H	
Lifting torque with reach at horizontal level, net:	84 kNm	61 955 ft-lb	
Outreach:	10 500 mm	34'-5"	
Slewing torque, gross (p=19 MPa, 2756 psi):	39 kNm	28 765 ft-lb	
Slewing angle:	260 °	260 °	
Stroke of boom extension:	2 200 mm	7'-3"	
Weight (without stabilizer):	1 980 kg	4 365 lb	
Pump recommendation:			
- working pressure	21 MPa	3 046 psi	
- flow	100-120 l/min	26-32 gpm	
- power input	34-42 kW	51-56 hp	
Harvester head recommendation:	Kesla 20RH/S		

The values provided by the manufacturer are indicative. Kesla reserves the right to make changes. The cranes pictured may have additional accessories.

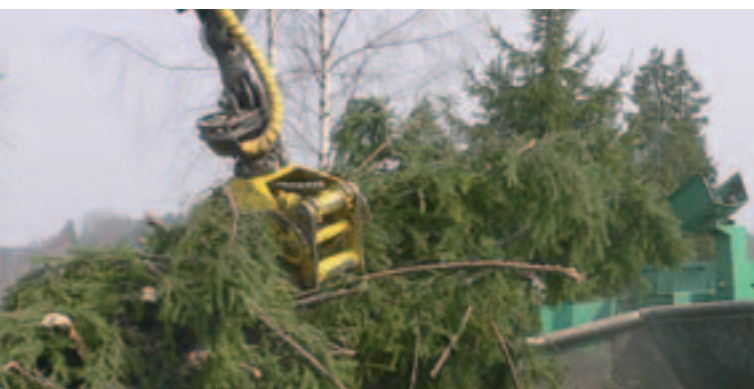


Kesla's product line includes two skidder cranes for small and medium-sized platform machines. Single- and double-boom configurations are available for both models.



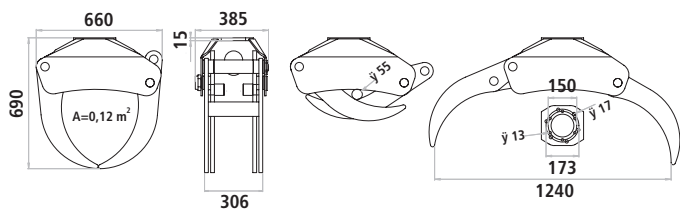
TECH. SPEC.	700R		700RT	
Lifting torque, net:	72 kNm	53 104 ft-lb	66 kNm	53 104 ft-lb
Outreach:	4 940 mm	16'-3"	6 300 mm	20'-2"
Slewing torque, gross (p=19 MPa, 2756 psi):	24 kNm	17 701 ft-lb	24 kNm	17 701 ft-lb
Slewing angle:	290 °	290 °	290 °	290 °
Stroke of boom extension:	1 600 mm	5'-3"	2 775 mm	9"
Weight without oil, grapple and rotator:	1 330 kg	2 932 lb	1 480 kg	3 263 lb
Pump recommendation:				
- working pressure	19 MPa	2 756 psi	19 MPa	2 756 psi
- flow	70-90 l/min	18-23 gpm	70-90 l/min	18-23 gpm
- power input	22-28 kW	30-38 hp	22-28 kW	30-38 hp

TECHNICAL SPECIFICATIONS	1258R	
Lifting torque, net:	97 kNm	71 544 ft-lb
Outreach:	5 810 mm	19'-1"
Slewing torque, gross (p=19 MPa, 2756 psi):	38 kNm	28 027 ft-lb
Slewing angle:	210 °	210 °
Stroke of boom extension:	1 400 mm	4'-7"
Weight without oil, grapple and rotator:	1 500 kg	3 307 lb
Pump recommendation:		
- working pressure	21 MPa	3 046 psi
- flow	80-100 l/min	21-26 gpm
- power input	27-34 kW	37-46 hp



Kesla manufactures over 1500 timber grapples annually. The F29 grapples suit forest machine cranes; the 15E and 20E models are intended for the handling of energy wood. The selection also includes guillotine grapple models for energy wood harvesting.

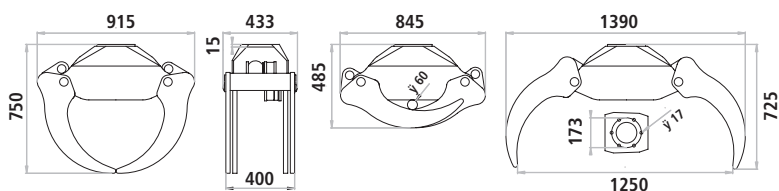
Factory-installed options such as an automatic lubrication system, several rotator alternatives, xenon lights and cylinder protectors are available for all of Kesla's cranes and timber grapples.



## TECHNICAL SPECIFICATIONS

### F29

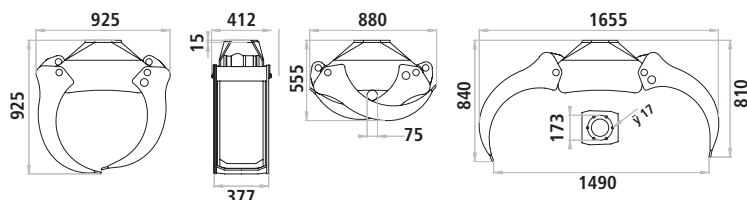
Grapple's area with tips touching:	0.12 m <sup>2</sup>	1.3 ft <sup>2</sup>
Working pressure:	17.5 MPa	2 538 psi
Jaw pressure with tips touching:	10.7 kN	2 405 lbf
Opening time (50 l/min, 13 gpm):	1.0 s	1.0 s
Closing time (50 l/min, 13 gpm):	1.3 s	1.3 s
Weight:	127 kg	280 lb
Maximum allowed load:	2 000 kg	4 409 lb



## TECHNICAL SPECIFICATIONS

### 20E

Grapple's area with tips touching:	0.18 m <sup>2</sup>	1.9 ft <sup>2</sup>
Working pressure:	23 MPa	3 336 psi
Jaw pressure with tips touching:	15.3 kN	3 440 lbf
Opening time (50 l/min, 13 gpm):	1.1 s	1.1 s
Closing time (50 l/min, 13 gpm):	1.5 s	1.5 s
Weight:	160 kg	353 lb
Maximum allowed load:	3 000 kg	6 614 lb



## TECHNICAL SPECIFICATIONS

### 15E

Grapple's area with tips touching:	0.28 m <sup>2</sup>	3.0 ft <sup>2</sup>
Working pressure:	23 MPa	3 336 psi
Jaw pressure with tips touching:	12.8 kN	2 878 lbf
Opening time (50 l/min, 13 gpm):	1.3 s	1.3 s
Closing time (50 l/min, 13 gpm):	1.9 s	1.9 s
Weight:	165 kg	364 lb
Maximum allowed load:	3 000 kg	6 614 lb



# **KESLA**

Kesla is a dynamically evolving machine engineering group with almost 50 years of experience as a developer and manufacturer of forest technology. Our technical know-how and continuous customer-oriented product development has enabled us to export our products to over 25 countries. Kesla controls the entire production chain by providing the best machines and equipment for wood harvesting, transport and chipping.

Manufactured by:



Kuurnankatu 24

FI-80100 Joensuu, FINLAND

Tel. +358 13 682 841

Fax +358 13 682 8300

[www.kestla.com](http://www.kestla.com)

Distributed by:

Sales and service: